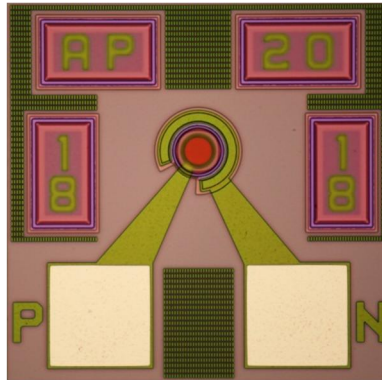


AP1503-20L5

10 Gb/s 1550nm Avalanche Photodiode



AP1503-20L5 is a 10 Gb/s germanium on silicon avalanche photodiode for SONET/SDH applications.

Features

- Top-illuminated device for ease of assembly
- Both P and N pads on top side
- Low breakdown voltage of 30 V
- Low capacitance of 0.12 pF
- Responds to an 800nm - 1600nm wavelength range
- AR coating optimized for 1550nm range applications
- Typical responsivity at 1550nm is 0.85 A/W @ M=1
- Optical illumination aperture diameter 20 μm (35- μm equivalent aperture diameter if using SiFotonics aspheric lens cap)

Applications

- SFP+, XFP, QSFP transceivers
- 10G SONET/SDH
- 10G Fibre Channel
- 10G/40GBASE Ethernet