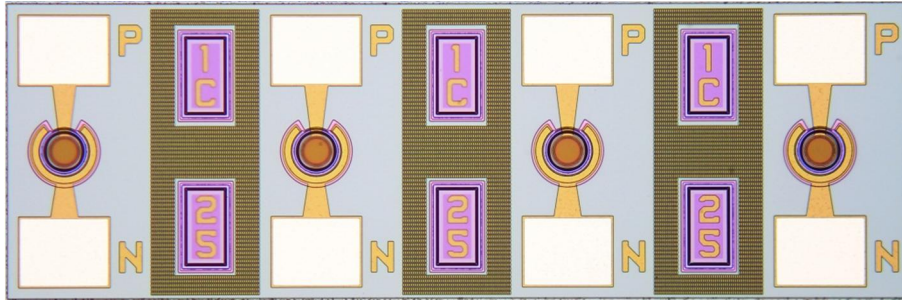


AP1541-25L5-250

4x10 Gb/s 1550nm Avalanche Photodiode Array



AP1541-25L5 is a 4x10 Gb/s germanium on silicon avalanche photodiode array 250- μm pitch for data link applications.

Features

- Top-illuminated device for ease of assembly
- Both P and N pads on top side
- 4/8/10/12 channels with pitch of 250/500/750- μm optional
- Low breakdown voltage of 30V
- Low capacitance of 0.16 pF
- Responds to an 800nm - 1600nm wavelength range
- AR coating optimized for 1550nm range applications
- Typical responsivity at 1550 nm is 0.85 A/W @ M=1
- Optical illumination aperture diameter 25 μm

Applications

- Parallel data link