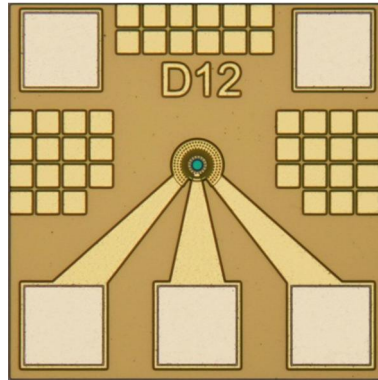




PD2001-12M3

25 Gb/s 1310nm PIN Photodiode



PD2001-12M3 is a 25 Gb/s germanium photodiode fabricated on silicon substrate, which responds to 800nm~1600nm wavelength range.

Features

- Top-illuminated device for ease of assembly
- Both P and N pads on top side
- Low capacitance of 60 fF
- Responds to an 800nm - 1600nm wavelength range
- AR coating optimized for 1310nm range applications
- Typical responsivity at 1310 nm is 0.9 A/W
- The pad metallization is optimized for wire-bonding or flip-chip soldering
- Optical illumination aperture diameter 12 μm
- Operating temperature range: -40 to 85°C

Applications

- 25G Ethernet
- High speed test and measurement